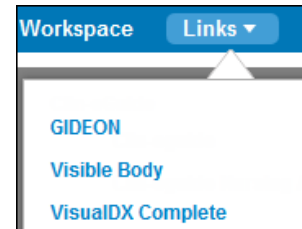


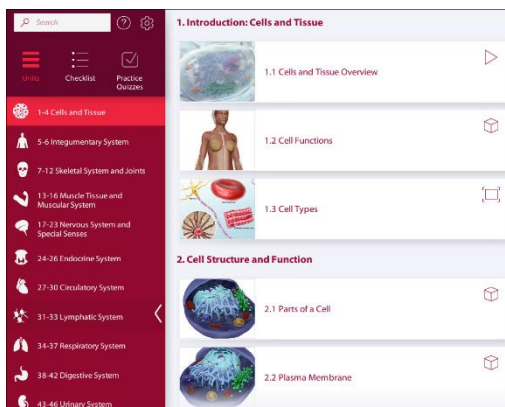
## Getting Started

1. Open your web browser and go to <http://ovidsp.ovid.com>.
2. Enter your User ID and Password in the login window; click **Login** (Note: users at institutions using IP authentication will be sent directly to the Ovid search screen, bypassing the Ovid login screen).
3. You may have the **Visible Body** link on your toolbar. If you don't have this, hover over the **Links** tab in the menu above the product selection screen.
4. Select **Visible Body** from the drop-down menu. This takes you to the Visible Body home page, which lists all of the modules included in your subscription.
5. From here, select **Anatomy & Physiology**.

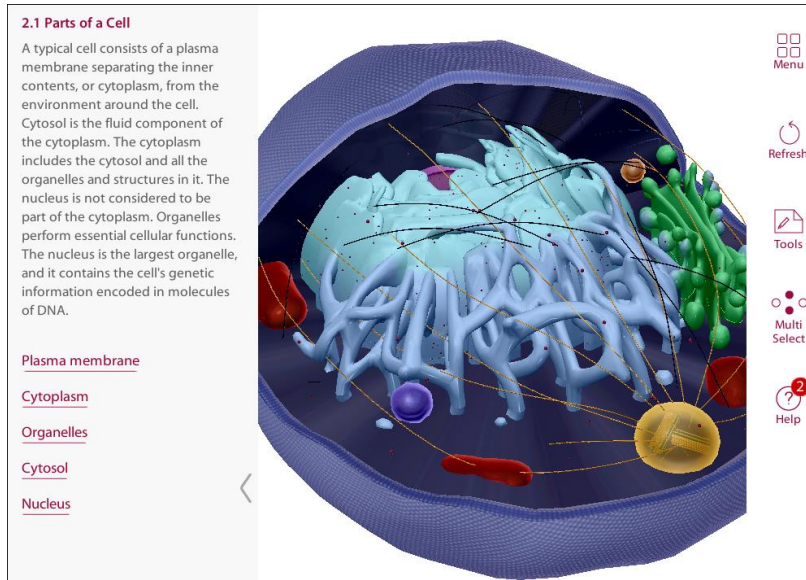




## Navigation

- **Units** – an index of all the body's systems
- **Checklists** – a list of all the key areas
- **Quizzes** – multiple choice tests on all areas



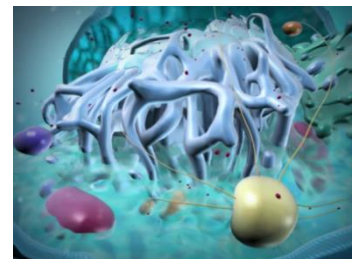
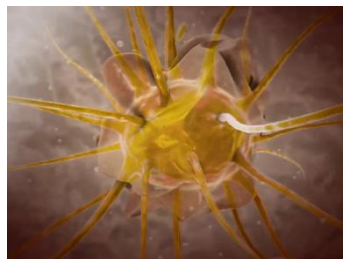
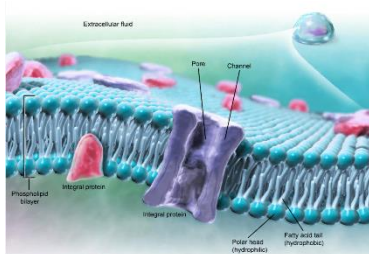
Select a section to view it.



- Click on a region, e.g. the eye, to display more information
- To hear a pronunciation of the Latin term, click 
- To see a description, click 
- Zoom in or out by scrolling your mouse
- To rotate the 3D model, click and drag using your mouse

## Additional Features

- Enhanced animations that explain physiology topics.
- 85 illustrations show processes and annotations.
- You can zoom, pan, rotate and dissect 3D models.
- You can download screenshots, make notes and draw on illustrations.
- Now available in English, Spanish, French, German, Japanese and Simplified Chinese.



For more information, click **Help** to view tutorials and support contact details. A mobile app is also available for Android and Apple devices.