

# OvidSP Tools and Widgets

Ovid Client  
Support Services

Streamline your users' research by making your Ovid subscriptions available at the point of use

## Contact Ovid Client Support today!

- Online Self Service Support Portal with over 100,000 visits a year  
[resourcecenter.ovidsp.com](http://resourcecenter.ovidsp.com)
- Customer Support:  
[support@ovid.com](mailto:support@ovid.com)
- Training Team:  
[ovidtrainer@ovid.com](mailto:ovidtrainer@ovid.com)
- Main Client Support offices:
- Sydney, Australia  
**61 (0) 2 9276 6600**
- London, UK:  
**44 (0) 20 7981 0600**
- Boston, MA, USA:  
**1 781-769-2599**

Find a support office in your area here:  
<http://www.ovid.com/site/contact/s/locations.jsp>

Ovid Tools & Widgets can help streamline your users' research by making your Ovid subscriptions available at the point of use to your staff and students. This will help you to improve visibility of your subscribed content, facilitate easy access and increase usage. Ovid's Technical Services team has access to a wide variety of Tools & Widgets and is available to help you and match your specific needs and content portfolio.

## Widgets

Embed a widget in your library intranet, to make your website a more effective research tool. Your users can select an Ovid resource and perform a search with one click!

Ask your Ovid Technical Support representative for a widget specially designed for your subscriptions.



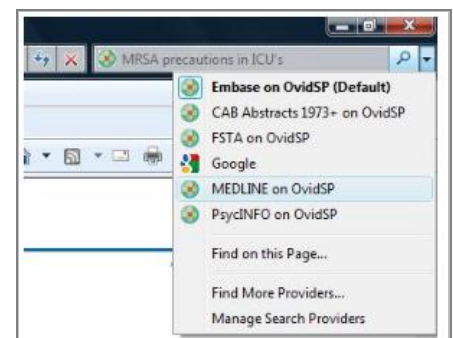
See the OvidSP Tools page for a wide range of Widget options:

<http://demo.ovid.com/demo/ovidspools/>

## Search Provider

Set your preferred database, journal or book as a search provider in your internet browser, and perform an Ovid search from anywhere in your workflow.

Install an Ovid Search Provider from the Ovid Resource Centre:  
[http://www.ovid.com/site/resources/library\\_tools\\_widgets.jsp#2](http://www.ovid.com/site/resources/library_tools_widgets.jsp#2)



## Support and Service Sites

- OvidSP Resource Centre:  
[resourcecenter.ovidsp.com](http://resourcecenter.ovidsp.com)
- Support & Training Resource Centre:  
[ovid.com/site/resources/index\\_support.jsp](http://ovid.com/site/resources/index_support.jsp)
- Ovid Support Online Community:  
[ovidsupport.custhelp.com](http://ovidsupport.custhelp.com)
- Ovid Training Modules:  
[ovid.com/site/help/training](http://ovid.com/site/help/training)
- Ovid Customer Usage Stats:  
[ovidspstats.ovid.com](http://ovidspstats.ovid.com)

## Top Articles

The Top Articles tool shows the most-viewed articles from Ovid-provided journals by month, journal and subject area. Help your users to keep up with the latest trends in their research area by setting a link to Top Articles in your library website.

Try Top Articles with this URL, or ask your Ovid Technical Support representative for a Top Articles widget:  
<http://ovidspstats.ovid.com/toparticles>

Wolters Kluwer Health | OvidSP

Select a Month: March 2012

Select a Subject: Critical Care

Select a Journal: <All>

### Critical Care March 2012 Top Articles

- Halt the downward spiral of traumatic hypovolemic shock.**  
Strickler, Jeff; MA, RN; CEN, CFRN  
Nursing Critical Care  
AN: 01244666-201203000-00010  
March 2012
- An Overview of Sepsis.**  
Latto, Celeste; RN, MSN  
Dimensions of Critical Care Nursing  
AN: 00003465-200809000-00001  
September/October 2008
- Management of Increased Intracranial Pressure in the Critically Ill Child With an Acute Neurological Injury.**  
Marcoux, Kelly; Keefe MSN, CPNP-AC  
AACN Clinical Issues: Advanced Practice in Acute & Critical Care  
AN: 00044067-200504000-00012  
April/June 2005

## Expert Searches

Links that will run a search and take the user directly to the results with one click! Set an Expert Search link in your library homepage so your users can easily retrieve the latest results from your institution's field of research.

Send your search strategy to Ovid Technical Support, and we will generate the Expert Search URL. Or just give us a research topic and our expert searchers and trainers will make some searches for you.

Try many Expert Search examples in the Ovid Resource Center:

[http://www.ovid.com/site/resources/index\\_expert\\_search.jsp](http://www.ovid.com/site/resources/index_expert_search.jsp)

Expert Searches

These searches have been created by expert researchers. Simply click on the links to view the latest results in your area of interest:

- [Search: Post traumatic stress in Children](#)
- [Search: Crush Syndrome](#)
- [Search: Compartment Syndrome](#)
- [Search: Venous Thrombosis](#)
- [Search: Radiation effects](#)
- [Search: Iodine dosage to prevent thyroid damage](#)
- [Search: Influenza prevention and control related to earthquakes](#)
- [Search: Cholera prevention & control related to Earthquakes](#)
- [Search: Sanitation & Vaccination](#)
- [Search: Public Health responses](#)

If you have a search which you would like made available here, please send the search strategy to [japan@ovid.com](mailto:japan@ovid.com)

Search History (7 searches) (Click to clear)	Results	Search Type	Actions
1. [x] Search: Post traumatic stress in Children	16,397	Advanced	Display More
2. [x] Search: Crush Syndrome	5,708	Advanced	Display More
3. [x] Search: Compartment Syndrome	1,298	Advanced	Display More
4. [x] Search: Venous Thrombosis	460	Advanced	Display More